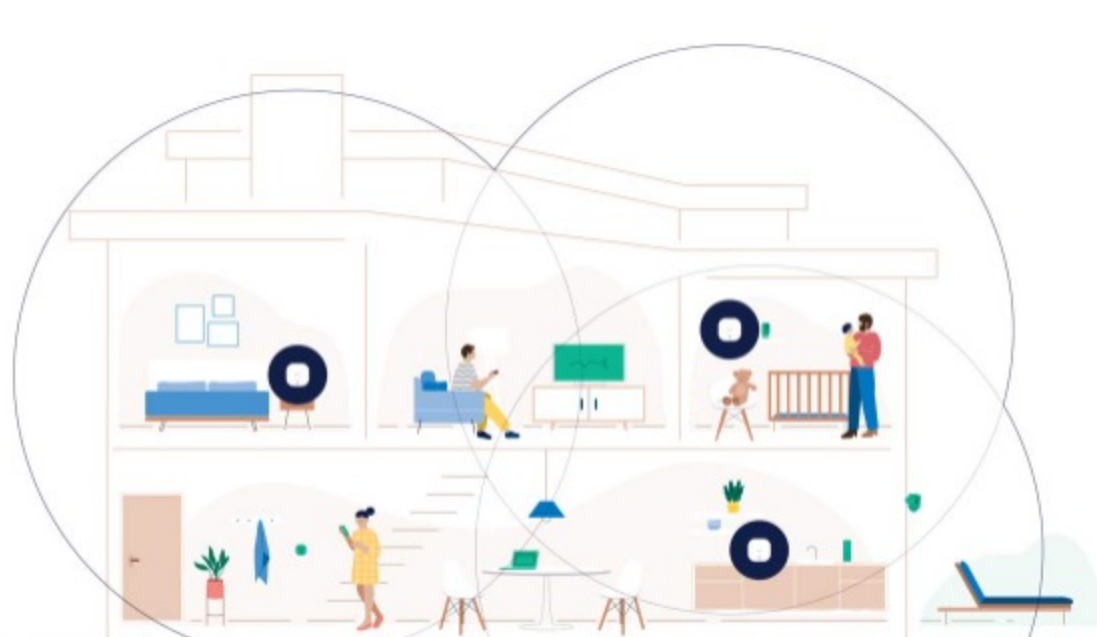


eero is the heart of the connected home

eero delivers world-class, whole-home connectivity for everybody. An eero 3-pack covers homes up to 460 m² (5,000 sq. ft.) in fast, reliable wifi from the basement to the backyard.



Say goodbye to dead spots and buffering

eero seamlessly connects your entire home with reliable wifi. Finally, you can stream, surf, and game from anywhere.

Every home and every device

Phones, computers, smart TVs, security cameras, and everything else just works with eero. Since eero works with Alexa and more, it's the best choice for smart homes.



Set up in minutes

1

Download

Get the eero app for iOS or Android

2

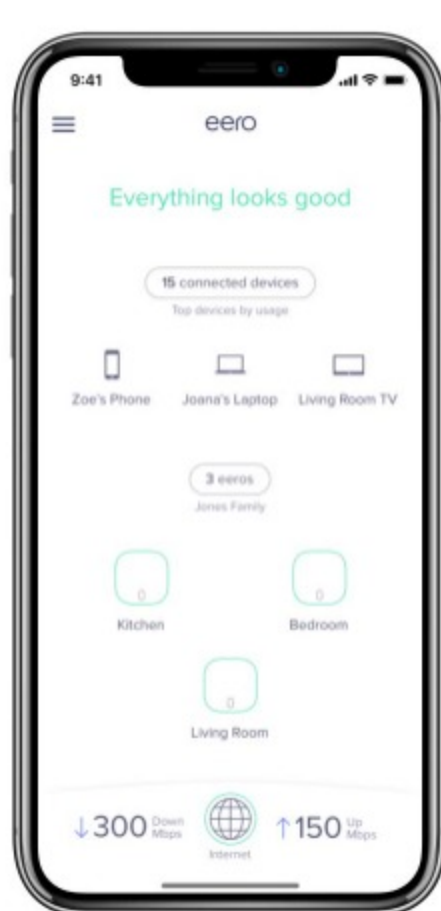
Unplug

Disconnect your modem and anything connected to it.

3

Begin

With the modem unplugged, open the app and follow along.



Convenience and control

From the eero app, you can see what's happening on your network, check device usage, share your network with friends, or even pause the internet.

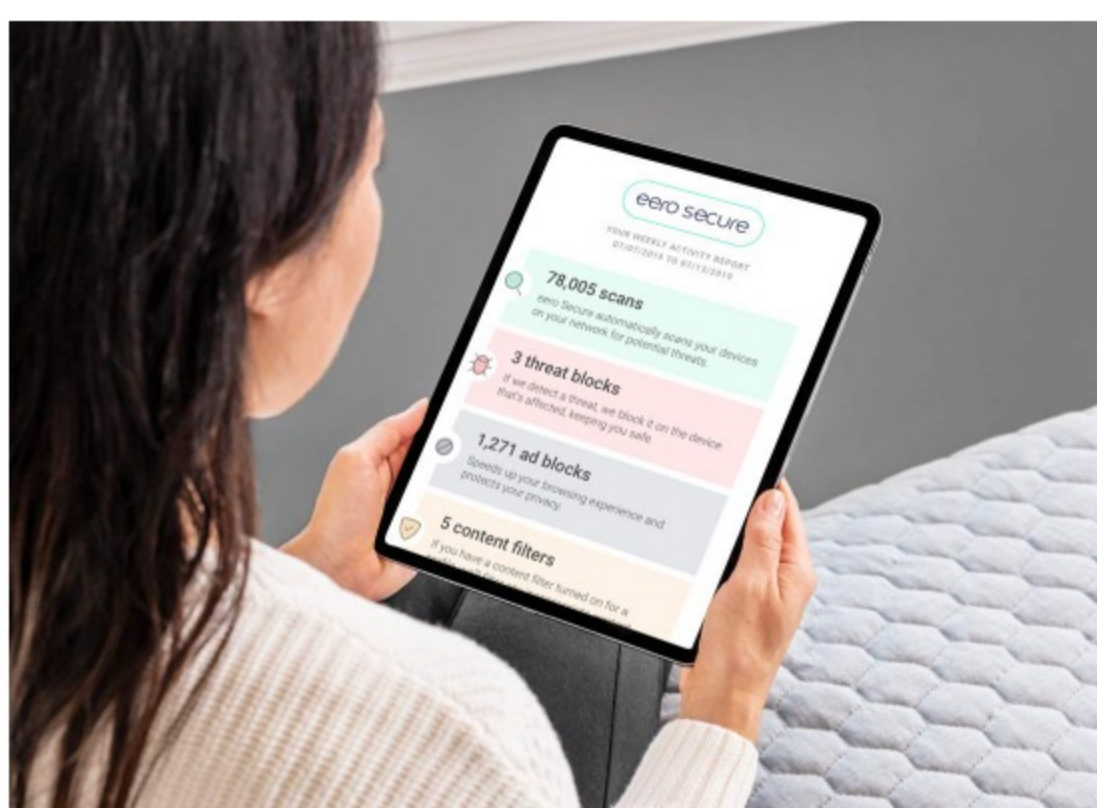
eero is always getting better

eero automatically updates to bring you security patches, improved performance, and new features.



Wifi that adapts to you

eero's TrueMesh technology intelligently routes traffic to avoid congestion, buffering, and dropoffs. Play, stream, and scroll in every room.



Your data is on lock-down with eero

eero Secure gives your family essential tools like threat scans, content warnings, and ad-blocking. Upgrade to eero Secure+ to get an exclusive bundle of top-rated security apps — Encrypt.me, 1Password, and Malwarebytes.

eero Secure and eero Secure+ are paid subscription services. Start a free 30-day trial in the eero mobile app.

Compare eero systems



eero mesh wifi system 3-pack



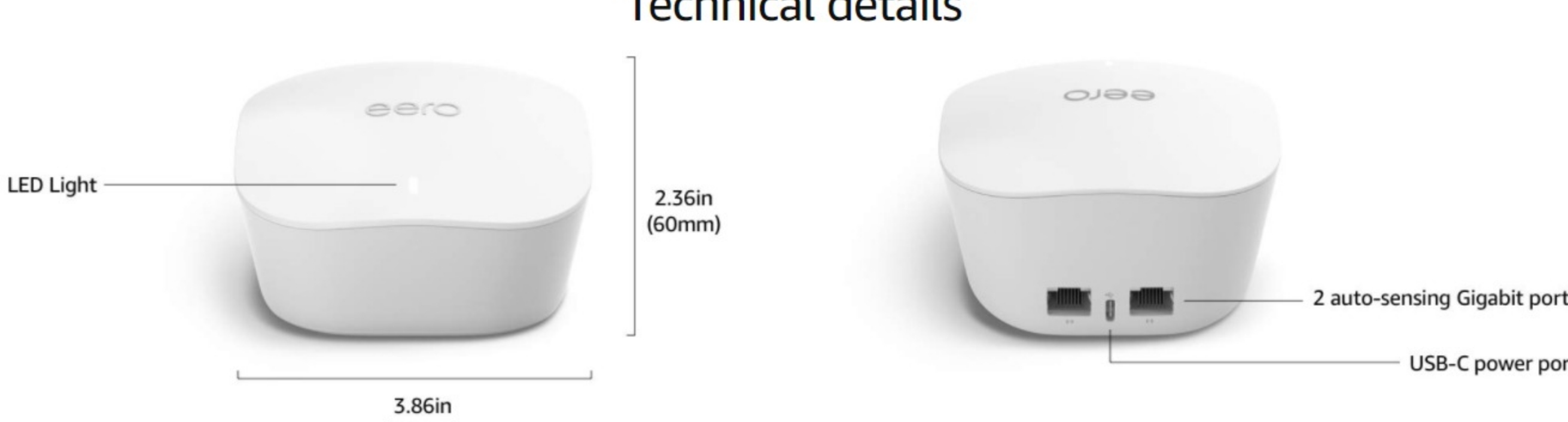
eero Pro mesh wifi system with 2 Beacons



eero Pro mesh wifi system 3-pack

	eero mesh wifi system 3-pack	eero Pro mesh wifi system with 2 Beacons	eero Pro mesh wifi system 3-pack
Price	From: CDN\$ 237.00	From: CDN\$ 439.00	From: CDN\$ 679.00
Ratings	★★★★☆ (686)	★★★★☆ (270)	★★★★☆ (270)
Wifi coverage	Best for homes up to 460 m ² (5,000 sq. ft.)	Best for homes up to 510 m ² (5,500 sq. ft.)	Best for homes up to 560 m ² (6,000 sq. ft.)
Wireless network speed	Best for internet speeds up to 350 Mbps	Best for internet speeds up to 350 Mbps	Best for internet speeds up to 550 Mbps
Wifi connectivity	Dual-band 2.4GHz and 5GHz	Tri-band (eero Pro), Dual-band wifi extender (eero Beacon)	Tri-band 2.4GHz, 5.2 GHz and 5.8 GHz
Ethernet ports	6 Ethernet ports (2 per device)	2 Ethernet ports on eero Pro	6 Ethernet ports (2 per device)
Placement	Countertop	Countertop (eero Pro), wall outlet (Beacon)	Countertop

Technical details



eero mesh wifi system

Wifi coverage	Best for homes up to 460 m ² (5,000 sq. ft.)
*Type *	Router (connects to modem as primary router)
Wireless network speed	Best for internet speeds up to 350 Mbps
Wifi connectivity	Dual-band wifi radios, simultaneous 2.4 GHz and 5 GHz, 2x2 MU-MIMO, beamforming, IEEE 802.11a/b/g/n/ac
Wired connectivity	2 auto-sensing Gigabit ports for WAN and/or LAN connectivity
Smart home connectivity	Works with Alexa, Apple HomeKit, Bluetooth LE 5.0
Processor, memory and storage	700 MHz quad-core processor, 512MB RAM, 4GB flash storage

Security and network services	WPA2 encryption, Family Profiles, DHCP, IPV6, NAT, VPN Passthrough, UPnP, Static IP and Port Forwarding
Required for setup	Supported iOS or Android device, Internet service (with cable or DSL modem, if required). Learn more.
Environmental requirements	Operating: 0°C-35°C Storage: -25°C-60°C Relative humidity operating: 20%-90% non-condensing Operating altitude: <3000 m
Dimensions	98 mm x 98 mm x 60 mm
Warranty and Support	1-year limited warranty. Customer support is available 7 days a week. Learn more.