

## EPIC Series

Play or relax to your heart's content. With its ergonomic design and flexible adjustability, you can easily customize this premium gaming chair from noblechairs to the most comfortable position for extended gaming sessions or relaxation afterwards.

### Revolutionary Seated Experience

noblechairs standards make for an unmistakable combination of aesthetics, luxurious materials and absolute comfort. It is due in no small part to the industrially automated precision manufacturing, with the end result being an unparalleled blend of flawless craftsmanship that helps to make the noblechairs seated experience a joy.

The sheer attention to detail that went into the development of the noblechairs EPIC is demonstrated in the design itself: an attractively embossed logo adorns the headrest and an elliptical aluminum emblem complete with attractive lettering.



### Elegance & Ergonomics

In addition to the impressive aesthetics of noblechairs, they are characterized by their distinct shape and the use of breathable, deformation-resistant breathable cold foam upholstery. It is the use of this high-density foam that helps the chair retain its shape over extended periods of time, effectively distributing the load while preventing users sinking too deeply into the upholstery.

Ensnconced within the comfortable cold foam upholstery, users will be pleased to find a solid steel frame. This is what lends the EPIC its strong and stable structure. Should additional neck- and lumbar support be required, two removable cushions complete with stitched logos are included.

The integrated rocking mechanism complete with locking function enables users to relax at the perfect angle with the help of a side-mounted lever. This lever allows users to lock the angle between the backrest and the seat pan, meaning that the noblechairs EPIC allows users to find the perfect seated position for maximum relaxation and comfort.

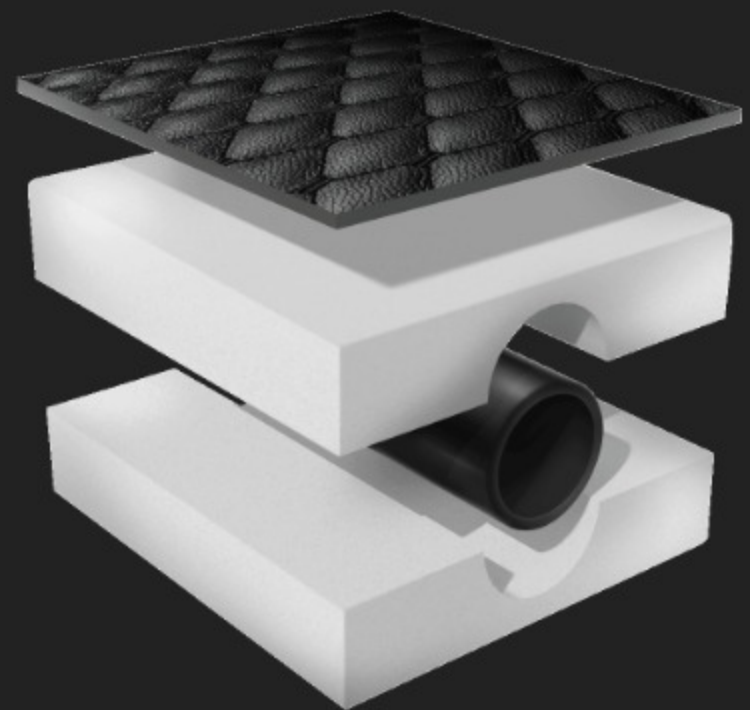
The counter pressure of the rocking mechanism can be dynamically adjusted via a rotary dial on the underside of the seat, and this—when combined with the smooth adjustability of the EPIC—results in unparalleled versatility along with superior ergonomics. This also means it receives official office chair certification in accordance with DIN EN 1335 and ANSI/BIFMA X5.1 2011.



### Premium Materials

When it comes to the covering materials used in our noblechairs, there is something for every taste: Vegan PU leather complete with delicate stitching, genuine real leather with unsurpassed breathability, or even supple nappa leather for unparalleled aesthetics.

All three premium-quality variants offer the ultimate racing seat manner befitting your individual preferences. Thanks to the superior craftsmanship, the result is a durable, low maintenance, UV- and moisture resistant seat—one that also happens to be remarkably comfortable.



### 4D Armrests

The noblechairs 4D armrests offer maximum adjustability across four dimensions: horizontally, laterally, vertically (height) along with an adjustable tilt angle. This makes achieving optimal ergonomics in line with your individual desk remarkably easy.

In addition to the variety of configuration options, the comfortably soft polyurethane of the 4D armrests helps ensure long-lasting comfort while working or gaming at the PC. The lightly textured surface also provides a comfortable texture.



### Robust Base

The matt black powder-coated base of our noblechairs consists of robust solid aluminum and this supports a weight of up to 120kg.

With its five arms, this strong, perfectly balanced base allows noblechairs owners to relax and recline the backrest in comfort by up to 135°.

The five quiet-running casters (Ø 60mm) with nylon cores and a polyurethane (PU) coating run smoothly and effortlessly over hard- and soft flooring. A TÜV-certified Safety Class 4 gas lift puts the final flourish to the smart design.

